



Short information about 12t demo truck – February 2014

# Safety Truck on Tour

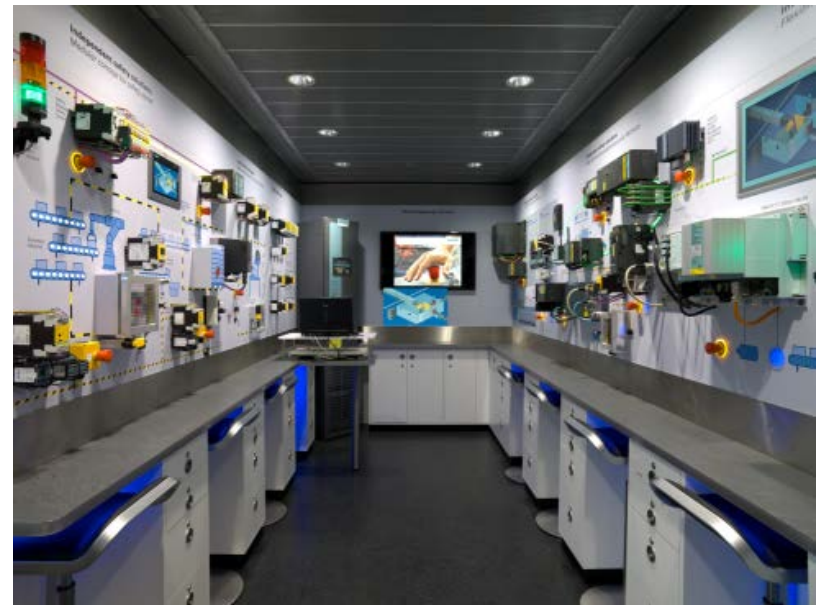
## Safety Truck on Tour



# Innovative safety solutions for maximum productivity

The Safety Integrated demo truck shows :

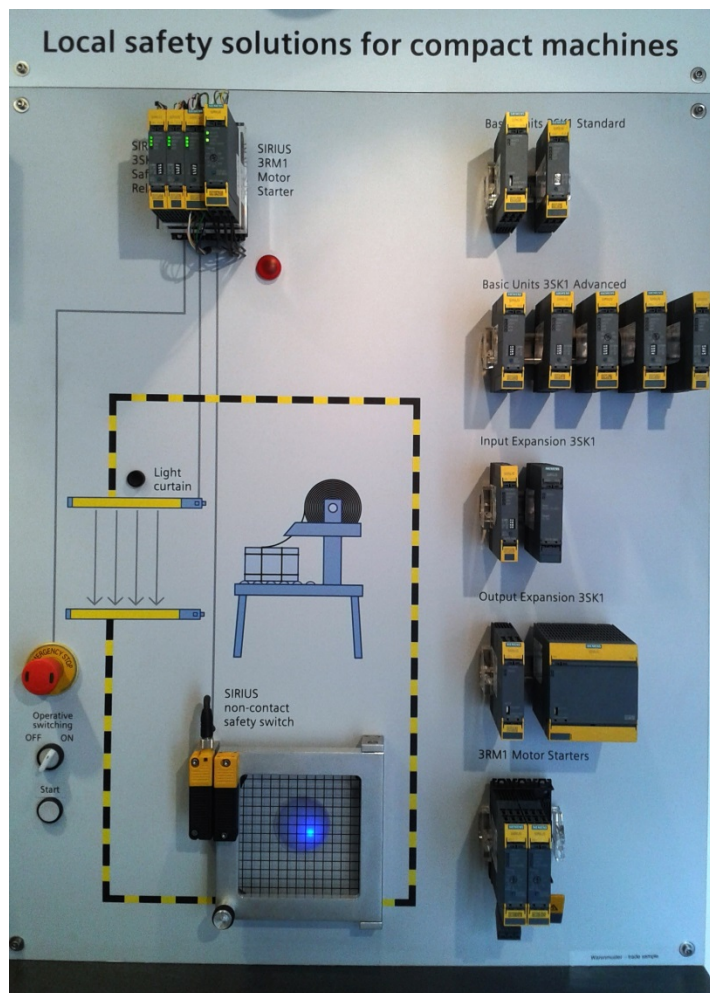
- Local safety solutions for compact machines
- Modular safety solutions for autonomous safety cells
- Flexible integrated safety solutions with PROFIsafe
- Integrated safety solutions for high performance applications
- Efficient engineering with TIA Portal
- Safety Evaluation Tool



# Local safety solutions for compact machines

## Application packaging with

- SIRIUS safety relays 3SK1 and
- SIRIUS safety motor starters 3RM1

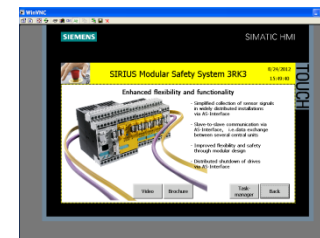






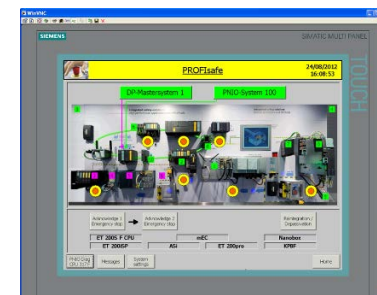
diagnostics &amp;

information

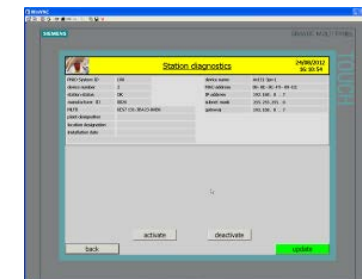


# Integrated safety solutions: Flexible applications with PROFsafe

## Application handling robot with SIMATIC, SINAMICS, wireless safety

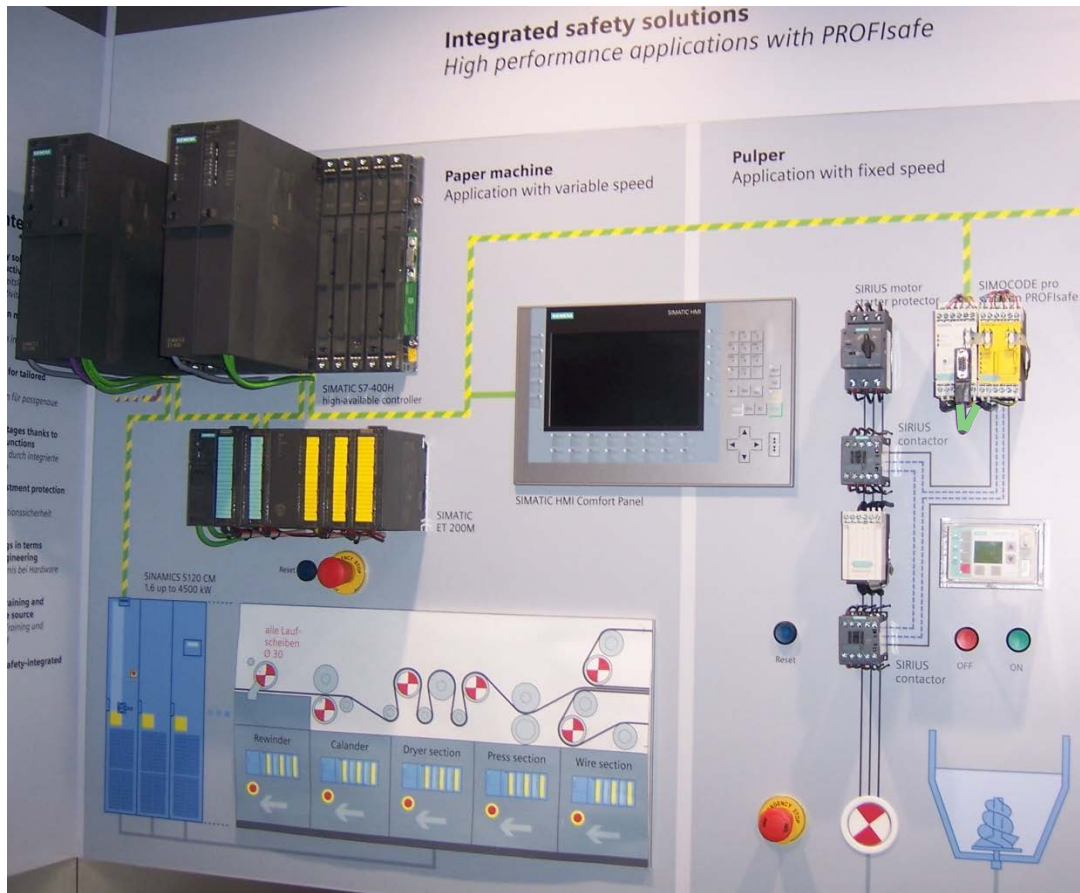


diagnostics



# Integrated safety solutions: High performance applications with PROFIsafe

## Application paper industry with Simocode pro PN and SINAMICS S120



information via  
key panel

# Innovative safety solutions with Safety Integrated

## Advantages:

- Easy integration into machines and plants
- Scalable solutions for individual safety concepts
- Increased productivity thanks to integrated safety functions
- Flexibility and investment security for modernization
- Savings of cost and time regarding hardware and engineering
- Certified products, training and support from a single source



[www.siemens.com/safety-integrated](http://www.siemens.com/safety-integrated)



**Thank you for your attention!**



**[siemens.com/safety-integrated](https://www.siemens.com/safety-integrated)**